

COMMERCIAL BUILDING LOT ZONED PLANNED RESORT DEVELOPMENT

NY Route 42 & Lanahan Road

Town of Thompson, NY | Sullivan County



9.5± ACRES ON 2 PARCELS

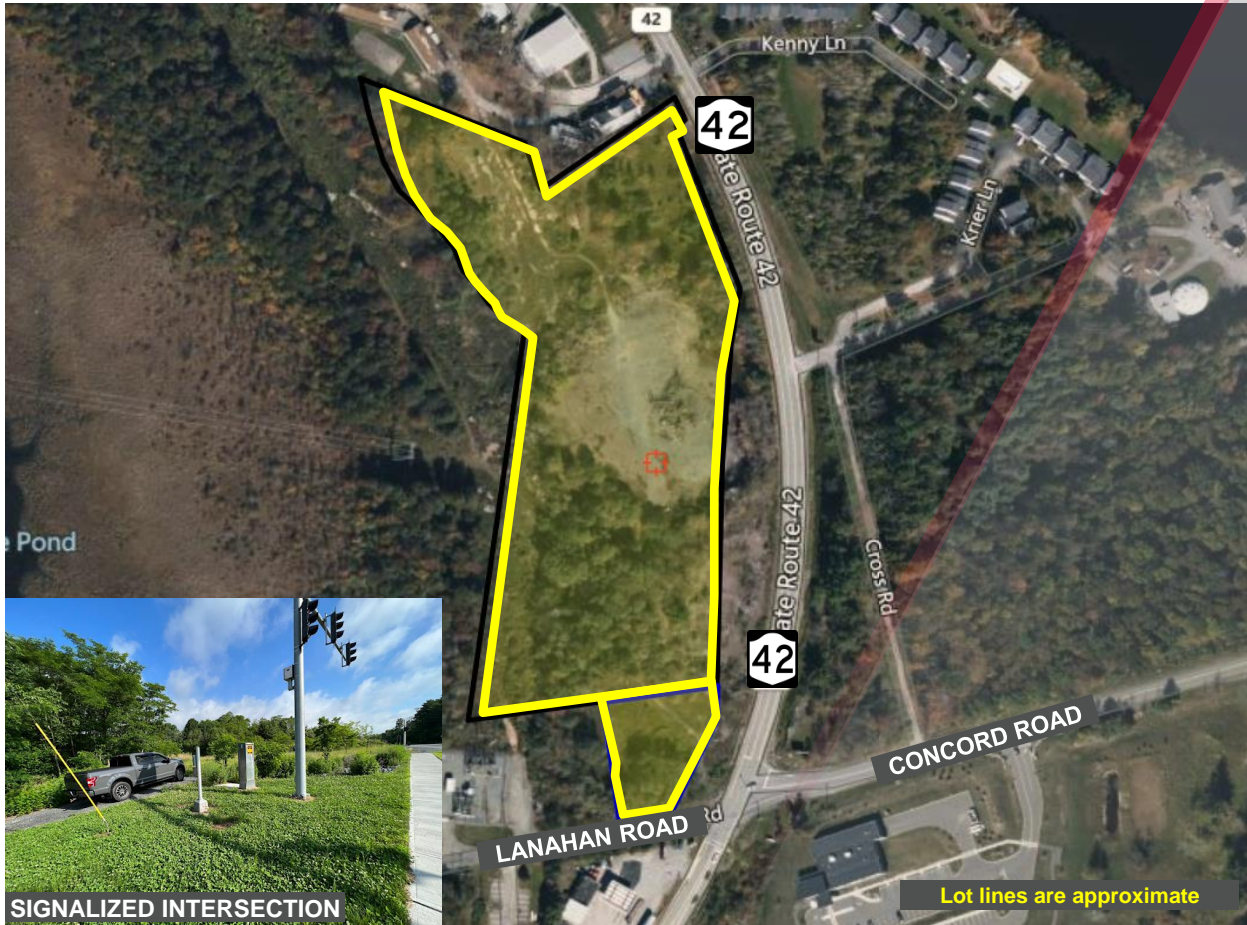
Property Highlights

Two commercial parcels totaling 9.5 acres located at the **signalized corner** of Route 42 & Lanahan Road zoned Planned Resort Development with numerous permitted uses including retail, office, medical, multi-family, hotels, motels, and more. Town water and sewer at the curb.

- .5 miles to Route 17 Exit 105 & Walmart Super Center
- .25 miles to Home Depot, Shoprite, Staples, Marshalls and Thompson Square Mall
- Less than 1.5 miles to Resorts World Casino, Kartrite Resort & Indoor Water Park, and the Monster Golf Course

Demographic	3 Miles	10 Miles	15 Miles
Population	11,165	40,774	71,786
Households	4,323	14,758	26,419
Average H.H. Income	\$56,831	\$79,323	\$84,919

Source: US Census Bureau, Census 2020 Esri Summary



Sale Offering: \$2,500,000

Contact

PETER H. MALONE
Real Estate Salesperson
+1 914 213 2863
pmalone@pyramidbrokerage.com

JOHN COLADONATO
Real Estate Salesperson
+1 845 787 1378
jcoladonato@pyramidbrokerage.com

JILL VARRICCHIO
Real Estate Salesperson
+1 845 787 1385
jvarricchio@pyramidbrokerage.com

356 Meadow Avenue, 2nd Floor
Newburgh, New York 12550
+1 845 522 5900
pyramidbrokerage.com

FOR SALE

NY Route 42 & Lanahan Road | Thompson, NY



ROAD FRONTAGE



SOUTH SIDE



FACING NORTH ALONG RT 42



FACING SOUTH ALONG RT 42



FACING EAST ALONG LANAHAN ROAD



PROPERTY

FOR SALE

NY Route 42 & Lanahan Road | Thompson, NY



FOR SALE

NY Route 42 & Lanahan Road | Thompson, NY

